



NOFLEE 2% BAIT



NOFLEE 2% BAIT is a very highly effective insecticide for the control of a wide variety of household pests. It is used especially for the control of Cockroaches and flies. **NOFLEE 2% BAIT** Contains generic molecule **Propoxure 2% Bait** as an Active ingredient.

MODE OF ACTIONS: **NOFLEE 2% BAIT** acts as a contact poison. Insects come in contact with its active ingredient

while crawling/moving on the sprayed surface, ensuring fast and long lasting effects.

MODE OF APPLICATION : Sprinkle Propoxure bait whenever flies congregate. Particular care should be taken to apply the bait around refuse dump, garbage heaps, market and slaughter house refuse, around cess pools and similar fly infested areas. For cockroach control sprinkle Propoxure bait in place where cockroaches congregate, rest or hide such as dark corners of closets, base of walls in basements, under sinks, around drain pipes, upon shelves etc. Propoxure bait can be used in industrial establishments, eating establishments, vegetable and meat market and similar indoor location for effective control of cockroaches and flies. Avoid direct contact with food stuffs.

FEATURES: 1) Broad spectrum activity. 2) Very strong flushing action 3) Good knockdown activity 4) long residual activity 5) Very safe to human and non target animals.

PRECAUTION: Store in cool, dry place. Keep away from food. Avoid contact with eye and skin, wash contaminated parts with soap and plenty of water & Wear protective clothing.

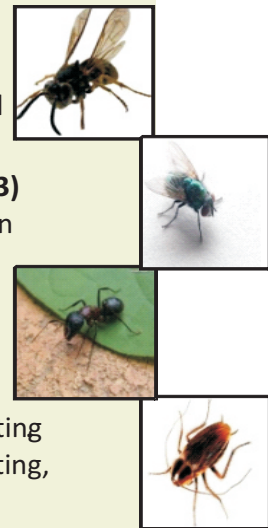
SYMPTOMS OF POISONING : Headache, nausea, vomiting, Blurred vision. They may progress to dizziness, sweating, salivation, chest pain, abdominal cramps and diarrhea.

ANTIDOTE: Atropine sulphate. Administer intravenously intramuscularly if intravenous injection is not possible. Recommended dosage for adults and children above 12 years. 0.4-2.0mg repeated every 15 minutes until full atropinisation is achieved. For children below 12 years 0.05mg/kg of body weight 2 PAM is contraindicated. Artificial respiration may be needed.

STORAGE: The package containing the insecticide shall be stored in separate rooms or premises away from the rooms or premises used for storing other articles or particularly articles or shall be kept in separate almirahs under lock and key depending upon the quantity and nature of the insecticide. The rooms or premises means for storing the insecticide shall be well built, dry, well-lit and ventilated and of sufficient dimensions.

PACKING AVAILABLE: Packing available in a small pack of 25gm, 40gm, and 100gm laminated pouch and in 1 kg container as well as bulk packing is available in the pack of 10kg and 25kg drum. Standard packing and match to statutory requirement for product and as per customer requirement.

Note: Information given above are the Guidelines best to our knowledge. Recommendation made are without any Guarantee since condition use are not in our control.



Manufactured By:
CHEMET WETS & FLOWS P. LTD.
Email: trichemet@rediffmail.com ♦ www.chemet.in

Distribution by :

HOUSEHOLD INSECTICIDE/PEST CONTROL

